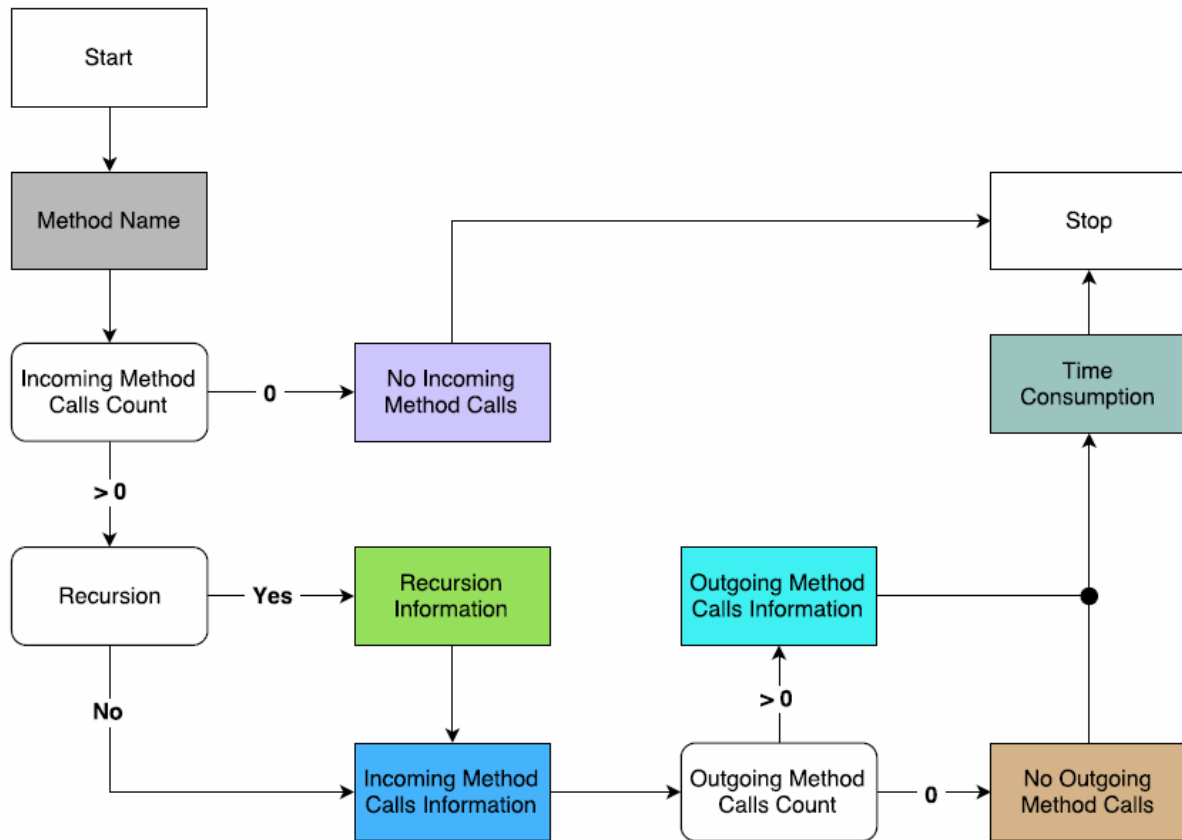


Report Summary



Legend (53)

Method Name
No Incoming Method Calls
Recursion Information
Incoming Method Calls
Outgoing Method Calls
No Outgoing Method Calls
Time Consumption

Template 1 (1=1)

1.1
Method <method> was never called.

Template 2 (1x2=2)

2.1
Method <method> was called only 1 time.

2.2

It did not make any method calls. It took <n> ms.

It made only 1 outgoing call. It took <n> ms.

Template 3 (1x1x2=2)

3.1

Method <method> was called only 1 time.

3.2

It made total <1+> outgoing calls

3.3

. It took <n> ms.

with maximum calls to method <method>. It took <n> ms.

Template 4 (1x2x2=4)

4.1

Method <method> was called total <1+> times

4.2

.

with maximum calls from method <method>.

4.3

It did not make any method calls. It took <n> ms.

It made only 1 outgoing call. It took <n> ms.

Template 5 (1x2x1x2=4)

5.1

Method <method> was called total <1+> times

5.2

.

with maximum calls from method <method>.

5.3

It made total <1+> outgoing calls

5.4

. It took <n> ms.

with maximum calls to method <method>. It took <n> ms.

Template 6 (2x1x2=4)

6.1

Method <method> was recursively called with recursion depth of only 1. It

Method <method> was recursively called with recursion depth of <1+>. It

6.2

was called only 1 time.

6.3

It did not make any method calls. It took <n> ms.

It made only 1 outgoing call. It took <n> ms.

Template 7 (2x1x1x3=6)

7.1

Method <method> was recursively called with recursion depth of only 1. It

Method <method> was recursively called with recursion depth of <1+>. It

7.2

was called only 1 time.

7.3

It made total <1+> outgoing calls

7.4

. It took <n> ms.

with maximum calls to method <method>. It took <n> ms.

with maximum calls to itself as direct recursion. It took <n> ms.

Template 8 (2x1x3x2=12)

8.1

Method <method> was recursively called with recursion depth of only 1. It

Method <method> was recursively called with recursion depth of <1+>. It

8.2

was called total <1+> times

8.3

.

with maximum calls from method <method>.

with maximum calls from itself as direct recursion.

8.4

It did not make any method calls. It took <n> ms.

It made only 1 outgoing call. It took <n> ms.

Template 9 (2x1x3x1x3=18)

9.1

Method <method> was recursively called with recursion depth of only 1. It

Method <method> was recursively called with recursion depth of <1+>. It

9.2

was called total <1+> times

9.3

with maximum calls from method <method>.
--

with maximum calls from itself as direct recursion.

9.4

It made total <1+> outgoing calls

9.5

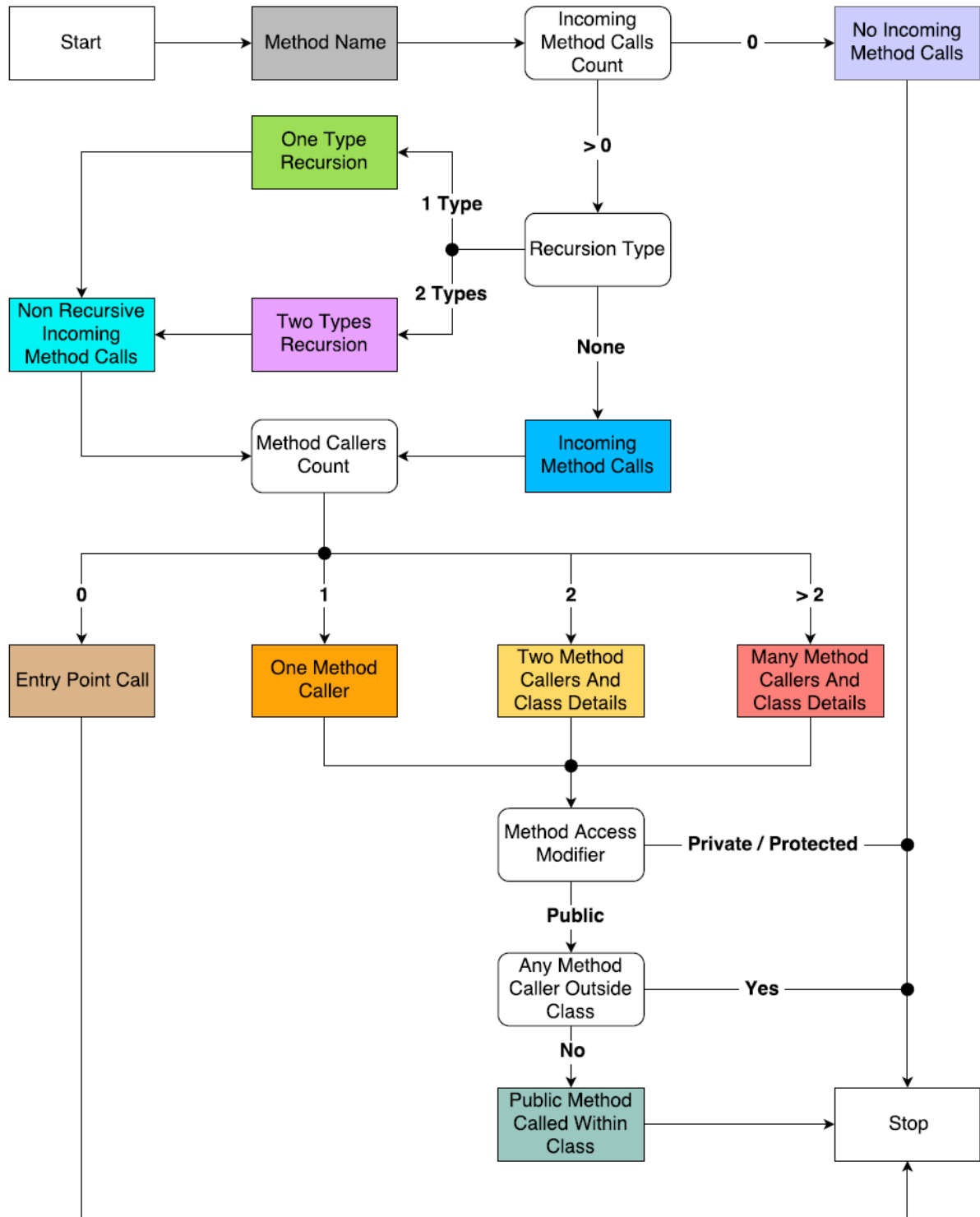
. It took <n> ms.

with maximum calls to method <method>. It took <n> ms.
--

with maximum calls to itself as direct recursion. It took <n> ms.

Method Calls

Paragraph 1



Legend (651)

Method Name
No Incoming Method Calls
Incoming Method Calls
Non Recursive Incoming Method Calls
One Method Caller
Two Method Callers And Class Details
Many Method Callers And Class Details
One Type Recursion
Two Types Recursion
Entry Point Method Caller
Public Method Called Within Class

Template 1 (2 = 2)

1.1
Method <method> was never called.
Method <method> was called only 1 time as entry point by Java virtual machine.

Template 2 (2 = 2)

2.1
Method <method> was called only 1 time by method <method>.
Method <method> was called only 1 time by method <method>. It is a public method but it was not called from outside its class.

Template 3 (2 = 2)

3.1
Method <method> was called <1+> times by only 1 method <method>.
Method <method> was called <1+> times by only 1 method <method>. It is a public method but it was never called from outside its class.

Template 4 (5x3x2 = 30)

4.1
Method <method> was called <1+> times. It was called only 1 time each by methods <method> and <method>
Method <method> was called <1+> times. It was called <1+> times each by methods <method> and <method>
Method <method> was called <1+> times. It was called <1+> times by method <method> and only 1 time by method <method>

Method <method> was called <1+> times. It was called only 1 time by method <method> and <1+> times by method <method>
Method <method> was called <1+> times. It was called <1+> times by method <method> and <1+> times by method <method>

4.2

.
which belong to the same class as method <method>.
which belong to the same class but different from method <method>.

4.3

It is a public method but it was never called from outside its class.

Template 5 (3x5x2 = 30)

5.1

Method <method> was called <1+> times by <2+> methods. It was called
Method <method> was called <1+> times by <2+> methods which belong to the same class as method <method>. It was called
Method <method> was called <1+> times by <2+> methods which belong to the same class but different from method <method>. It was called

5.2

maximum <1+> times by method <method>.
maximum <1+> times each by methods <method> and <method>.
maximum <1+> times each by <2+> methods.
<1+> times each by all methods.
only 1 time each by all methods.

5.3

It is a public method but it was never called from outside its class.

Template 6 (2x2 = 4)

6.1

Method <method> is a direct recursive method which was called <1+> times
Method <method> is an indirect recursive method which was called <1+> times

6.2

out of which only 1 time it was recursive. It was called non-recursively only 1 time as entry point by Java virtual machine.
out of which <1+> times it was recursive. It was called non-recursively only 1 time as entry point by Java virtual machine.

Template 7 (2x2 = 4)

7.1

Method <method> is a direct recursive method which was called <1+> times out of which only 1 time it was recursive. It was called non-recursively only 1 time by method <method>.

Method <method> is a direct recursive method which was called <1+> times out of which <1+> times it was recursive. It was called non-recursively only 1 time by method <method>.

7.2

It is a public method but it was not called from outside its class.

Template 8 (2x2 = 4)

8.1

Method <method> is an indirect recursive method which was called <1+> times out of which only 1 time it was recursive. It was called non-recursively only 1 time by method <method>.

Method <method> is an indirect recursive method which was called <1+> times out of which <1+> times it was recursive. It was called non-recursively only 1 time by method <method>.

8.2

It is a public method but it was not called non-recursively from outside its class.

Template 9 (2x2 = 4)

9.1

Method <method> is a direct recursive method which was called <1+> times out of which only 1 time it was recursive. It was called non-recursively <1+> times by only 1 method <method>.

Method <method> is a direct recursive method which was called <1+> times out of which <1+> times it was recursive. It was called non-recursively <1+> times by only 1 method <method>.

9.2

It is a public method but it was never called from outside its class.

Template 10 (2x2 = 4)

10.1

Method <method> is an indirect recursive method which was called <1+> times out of which only 1 time it was recursive. It was called non-recursively <1+> times by only 1 method <method>.

Method <method> is an indirect recursive method which was called <1+> times out of which <1+> times it was recursive. It was called non-recursively <1+> times by only 1 method <method>.

10.2

It is a public method but it was never called non-recursively from outside its class.

Template 11 ($2 \times 5 \times 3 \times 2 = 60$)

11.1

Method <method> is a direct recursive method which was called <1+> times out of which only 1 time it was recursive.

Method <method> is a direct recursive method which was called <1+> times out of which <1+> times it was recursive.

11.2

It was called non-recursively <1+> times, only 1 time each by methods <method> and <method>

It was called non-recursively <1+> times, <1+> times each by methods <method> and <method>

It was called non-recursively <1+> times, <1+> times by method <method> and only 1 time by method <method>

It was called non-recursively <1+> times, only 1 time by method <method> and <1+> times by method <method>

It was called non-recursively <1+> times, <1+> times by method <method> and <1+> times by method <method>

11.3

which belong to the same class as method <method>.

which belong to the same class but different from method <method>.

11.4

It is a public method but it was never called from outside its class.

Template 12 ($2 \times 5 \times 3 \times 2 = 60$)

12.1

Method <method> is an indirect recursive method which was called <1+> times out of which only 1 time it was recursive.

Method <method> is an indirect recursive method which was called <1+> times out of which <1+> times it was recursive.

12.2

It was called non-recursively <1+> times, only 1 time each by methods <method> and <method>

It was called non-recursively <1+> times, <1+> times each by methods <method> and <method>

It was called non-recursively <1+> times, <1+> times by method <method> and only 1 time by method <method>

It was called non-recursively <1+> times, only 1 time by method <method> and <1+> times by method <method>

It was called non-recursively <1+> times, <1+> times by method <method> and <1+> times by method <method>

12.3

.
which belong to the same class as method <method>.
which belong to the same class but different from method <method>.

12.4

It is a public method but it was never called non-recursively from outside its class.

Template 13 (2x3x5x2 = 60)

13.1

Method <method> is a direct recursive method which was called <1+> times out of which only 1 time it was recursive.

Method <method> is a direct recursive method which was called <1+> times out of which <1+> times it was recursive.

13.2

It was called non-recursively <1+> times by <2+> methods. It was called
It was called non-recursively <1+> times by <2+> methods which belong to the same class as method <method>. It was called
It was called non-recursively <1+> times by <2+> methods which belong to the same class but different from method <method>. It was called

13.3

maximum <1+> times by method <method>.
maximum <1+> times each by methods <method> and <method>.
maximum <1+> times each by <2+> methods.
<1+> times each by all methods.
only 1 time each by all methods.

13.4

It is a public method but it was never called from outside its class.

Template 14 ($2 \times 3 \times 5 \times 2 = 60$)

14.1

Method <method> is an indirect recursive method which was called <1+> times out of which only 1 time it was recursive.

Method <method> is an indirect recursive method which was called <1+> times out of which <1+> times it was recursive.

14.2

It was called non-recursively <1+> times by <2+> methods. It was called

It was called non-recursively <1+> times by <2+> methods which belong to the same class as method <method>. It was called

It was called non-recursively <1+> times by <2+> methods which belong to the same class but different from method <method>. It was called

14.3

maximum <1+> times by method <method>.

maximum <1+> times each by methods <method> and <method>.

maximum <1+> times each by <2+> methods.

<1+> times each by all methods.

only 1 time each by all methods.

14.3

It is a public method but it was never called non-recursively from outside its class.

Template 15 ($5 = 5$)

15.1

Method <method> is a recursive method which was called <2+> times out of which <1+> times it was recursive, only 1 time each direct recursive and indirect recursive. It was called non-recursively only 1 time as entry point by Java virtual machine.

Method <method> is a recursive method which was called <2+> times out of which <1+> times it was recursive, <1+> time each direct recursive and indirect recursive. It was called non-recursively only 1 time as entry point by Java virtual machine.

Method <method> is a recursive method which was called <2+> times out of which <1+> times it was recursive, only 1 time direct recursive and <1+> indirect recursive. It was called non-recursively only 1 time as entry point by Java virtual machine.

Method <method> is a recursive method which was called <2+> times out of which <1+> times it was recursive, <1+> time direct recursive and only 1 time indirect recursive. It was called non-recursively only 1 time as entry point by Java virtual machine.

Method <method> is a recursive method which was called <2+> times out of which <1+> times it was recursive, <1+> time direct recursive and <1+> indirect recursive. It was called non-recursively only 1 time as entry point by Java virtual machine.

Template 16 (5x2 = 10)

16.1

Method <method> is a recursive method which was called <2+> times out of which <1+> times it was recursive, only 1 time each direct recursive and indirect recursive. It was called non-recursively only 1 time by method <method>.

Method <method> is a recursive method which was called <2+> times out of which <1+> times it was recursive, <1+> time each direct recursive and indirect recursive. It was called non-recursively only 1 time by method <method>.

Method <method> is a recursive method which was called <2+> times out of which <1+> times it was recursive, only 1 time direct recursive and <1+> indirect recursive. It was called non-recursively only 1 time by method <method>.

Method <method> is a recursive method which was called <2+> times out of which <1+> times it was recursive, <1+> time direct recursive and only 1 time indirect recursive. It was called non-recursively only 1 time by method <method>.

Method <method> is a recursive method which was called <2+> times out of which <1+> times it was recursive, <1+> time direct recursive and <1+> indirect recursive. It was called non-recursively only 1 time by method <method>.

16.2

It is a public method but it was not called non-recursively from outside its class.

Template 17 (5x2 = 10)

17.1

Method <method> is a recursive method which was called <2+> times out of which <1+> times it was recursive, only 1 time each direct recursive and indirect recursive. It was called non-recursively <1+> times by only 1 method <method>.

Method <method> is a recursive method which was called <2+> times out of which <1+> times it was recursive, <1+> time each direct recursive and indirect recursive. It was called non-recursively <1+> times by only 1 method <method>.

Method <method> is a recursive method which was called <2+> times out of which <1+> times it was recursive, only 1 time direct recursive and <1+> indirect recursive. It was called non-recursively <1+> times by only 1 method <method>.

Method <method> is a recursive method which was called <2+> times out of which <1+> times it was recursive, <1+> time direct recursive and only 1 time indirect recursive. It was called non-recursively <1+> times by only 1 method <method>.

Method <method> is a recursive method which was called <2+> times out of which <1+> times it was recursive, <1+> time direct recursive and <1+> indirect recursive. It was called non-recursively <1+> times by only 1 method <method>.

17.2

It is a public method but it was never called non-recursively from outside its class.

Template 18 (5x5x3 = 150)

18.1

Method <method> is a recursive method which was called <2+> times out of which <1+> times it was recursive, only 1 time each direct recursive and indirect recursive.

Method <method> is a recursive method which was called <2+> times out of which <1+> times it was recursive, <1+> time each direct recursive and indirect recursive.

Method <method> is a recursive method which was called <2+> times out of which <1+> times it was recursive, only 1 time direct recursive and <1+> indirect recursive.

Method <method> is a recursive method which was called <2+> times out of which <1+> times it was recursive, <1+> time direct recursive and only 1 time indirect recursive.

Method <method> is a recursive method which was called <2+> times out of which <1+> times it was recursive, <1+> time direct recursive and <1+> indirect recursive.

18.2

It was called non-recursively <1+> times, only 1 time each by methods <method> and <method>

It was called non-recursively <1+> times, <1+> times each by methods <method> and <method>

It was called non-recursively <1+> times, <1+> times by method <method> and only 1 time by method <method>

It was called non-recursively <1+> times, only 1 time by method <method> and <1+> times by method <method>

It was called non-recursively <1+> times, <1+> times by method <method> and <1+> times by method <method>

18.3

.
which belong to the same class as method <method>.

which belong to the same class but different from method <method>.

18.4

It is a public method but it was never called non-recursively from outside its class.

Template 19 (5x3x5x2 = 150)

19.1

Method <method> is a recursive method which was called <2+> times out of which <1+> times it was recursive, only 1 time each direct recursive and indirect recursive.

Method <method> is a recursive method which was called <2+> times out of which <1+> times it was recursive, <1+> time each direct recursive and indirect recursive.

Method <method> is a recursive method which was called <2+> times out of which <1+> times it was recursive, only 1 time direct recursive and <1+> indirect recursive.

Method <method> is a recursive method which was called <2+> times out of which <1+> times it was recursive, <1+> time direct recursive and only 1 time indirect recursive.

Method <method> is a recursive method which was called <2+> times out of which <1+> times it was recursive, <1+> time direct recursive and <1+> indirect recursive.

19.2

It was called non-recursively <1+> times by <2+> methods. It was called

It was called non-recursively <1+> times by <2+> methods which belong to the same class as method <method>. It was called

It was called non-recursively <1+> times by <2+> methods which belong to the same class but different from method <method>. It was called

19.3

maximum <1+> times by method <method>.

maximum <1+> times each by methods <method> and <method>.

maximum <1+> times each by <2+> methods.

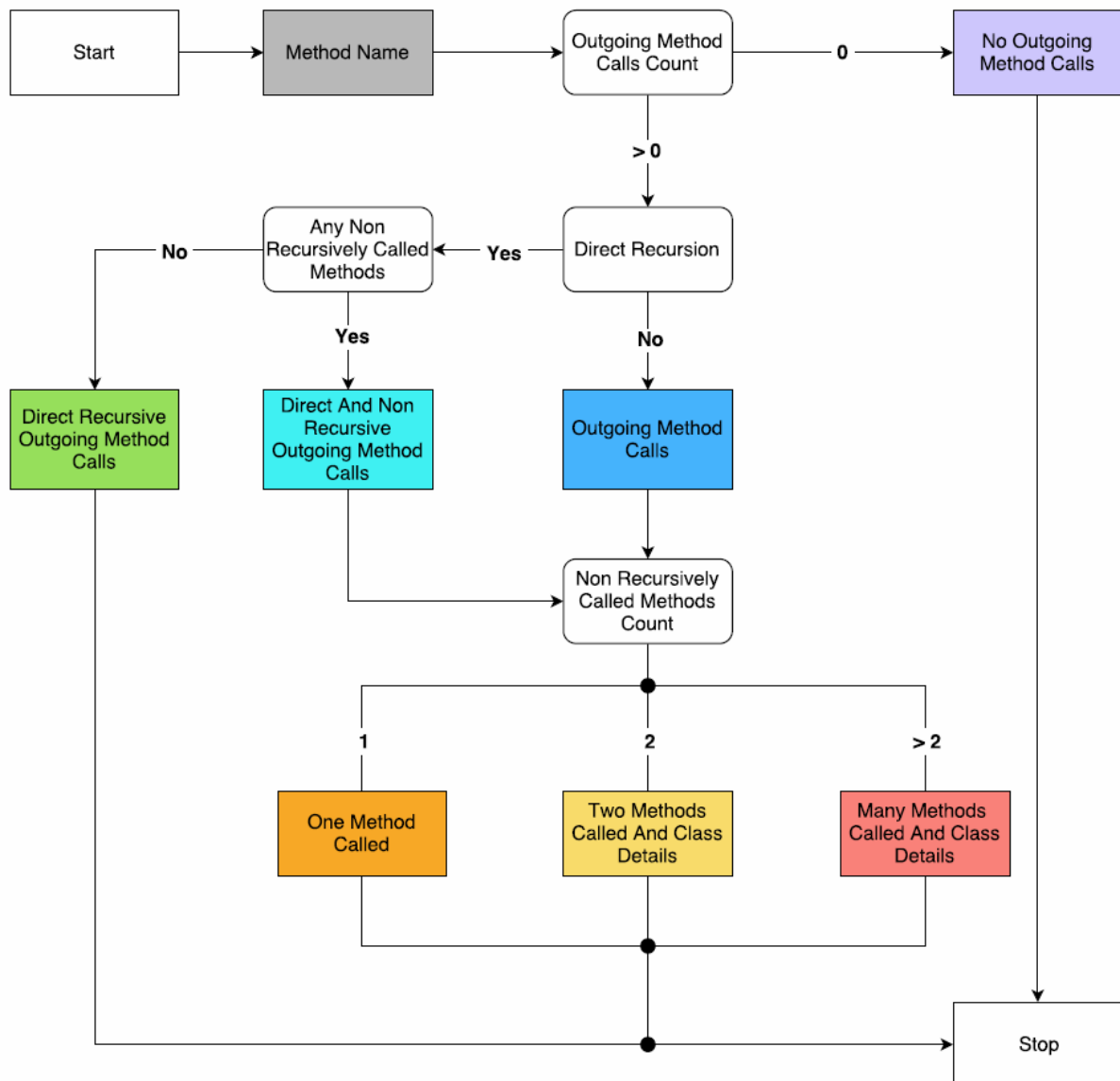
<1+> times each by all methods.

only 1 time each by all methods.

19.4

It is a public method but it was never called non-recursively from outside its class.

Paragraph 2



Legend (97)

Method Name
No Outgoing Method Calls
Outgoing Methods Calls
Direct And Non Recursive Outgoing Method Calls
One Method Called
Two Methods Called And Class Details
Many Methods Called And Class Details
Direct Recursive Outgoing Method Calls

Template 1 (3=3)

1.1
Method <method> did not make any method calls.
Method <method> made only 1 call to method <method>.
Method <method> made <1+> calls to only 1 method <method>.

Template 2 (5x3=15)

2.1
Method <method> made <1+> calls. It made only 1 call each to methods <method> and <method>
Method <method> made <1+> calls. It made <1+> calls each to methods <method> and <method>
Method <method> made <1+> calls. It made only 1 call to method <method> and <1+> calls to method <method>
Method <method> made <1+> calls. It made <1+> calls to method <method> and only 1 call to method <method>
Method <method> made <1+> calls. It made <1+> calls to method <method> and <1+> calls to method <method>

2.2
.
which belong to the same class as method <method>.
which belong to the same class but different from method <method>.

Template 3 (3x5=15)

3.1
Method <method> made <1+> calls to <2+> methods. It made
Method <method> made <1+> calls to <2+> methods which belong to the same class as method <method>. It made
Method <method> made <1+> calls to <2+> methods which belong to the same class but different from method <method>. It made

3.2
maximum <1+> calls to method <method>.
maximum <1+> calls each to methods <method> and <method>.
maximum <1+> calls each to <2+> methods.
<1+> times each to all methods.
only 1 time each to all methods.

Template 4 (2=2)

4.1

Method <method> made only 1 call which was direct recursive to itself.
Method <method> made <1+> calls which were direct recursive to itself.

Template 5 (2=2)

5.1
Method <method> made <1+> calls out of which only 1 call was direct recursive to itself. It made only 1 call to method <method>.
Method <method> made <1+> calls out of which <1+> calls were direct recursive to itself. It made <1+> calls to only 1 method <method>.

Template 6 (2x5x3=30)

6.1
Method <method> made <1+> calls out of which only 1 call was direct recursive to itself. It made <1+> calls
Method <method> made <1+> calls out of which <1+> calls were direct recursive to itself. It made <1+> calls

6.2
to other methods, only 1 call each to methods <method> and <method>
to other methods, <1+> calls each to methods <method> and <method>
to other methods, only 1 call to method <method> and <1+> calls to method <method>
to other methods, <1+> calls to method <method> and only 1 call to method <method>
to other methods, <1+> calls to method <method> and <1+> calls to method <method>

6.3
.
which belong to the same class as method <method>.
which belong to the same class but different from method <method>.

Template 7 (2x3x5=30)

7.1
Method <method> made <1+> calls out of which only 1 call was direct recursive to itself. It made <1+> calls
Method <method> made <1+> calls out of which <1+> calls were direct recursive to itself. It made <1+> calls

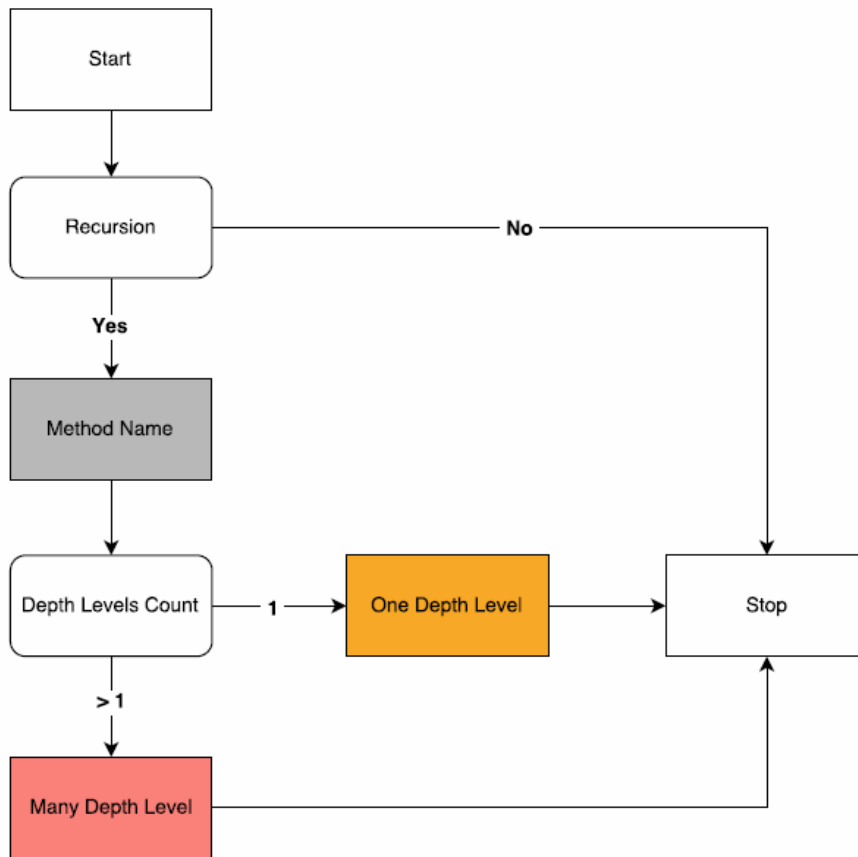
7.2
to <2+> methods. It made
to <2+> methods which belong to the same class as method <method>. It made
to <2+> methods which belong to the same class but different from method <method>. It made

7.3

Supplemental material for VISSOFT 2017 submission "Method Execution Reports"

maximum <1+> calls to method <method>.
maximum <1+> calls each to methods <method> and <method>.
maximum <1+> calls each to <2+> methods.
<1+> times each to all methods.
only 1 time each to all methods.

Paragraph 3



Legend (4)

Method Name
One Depth Level
Many Depth Levels

Template 1 (2=2)

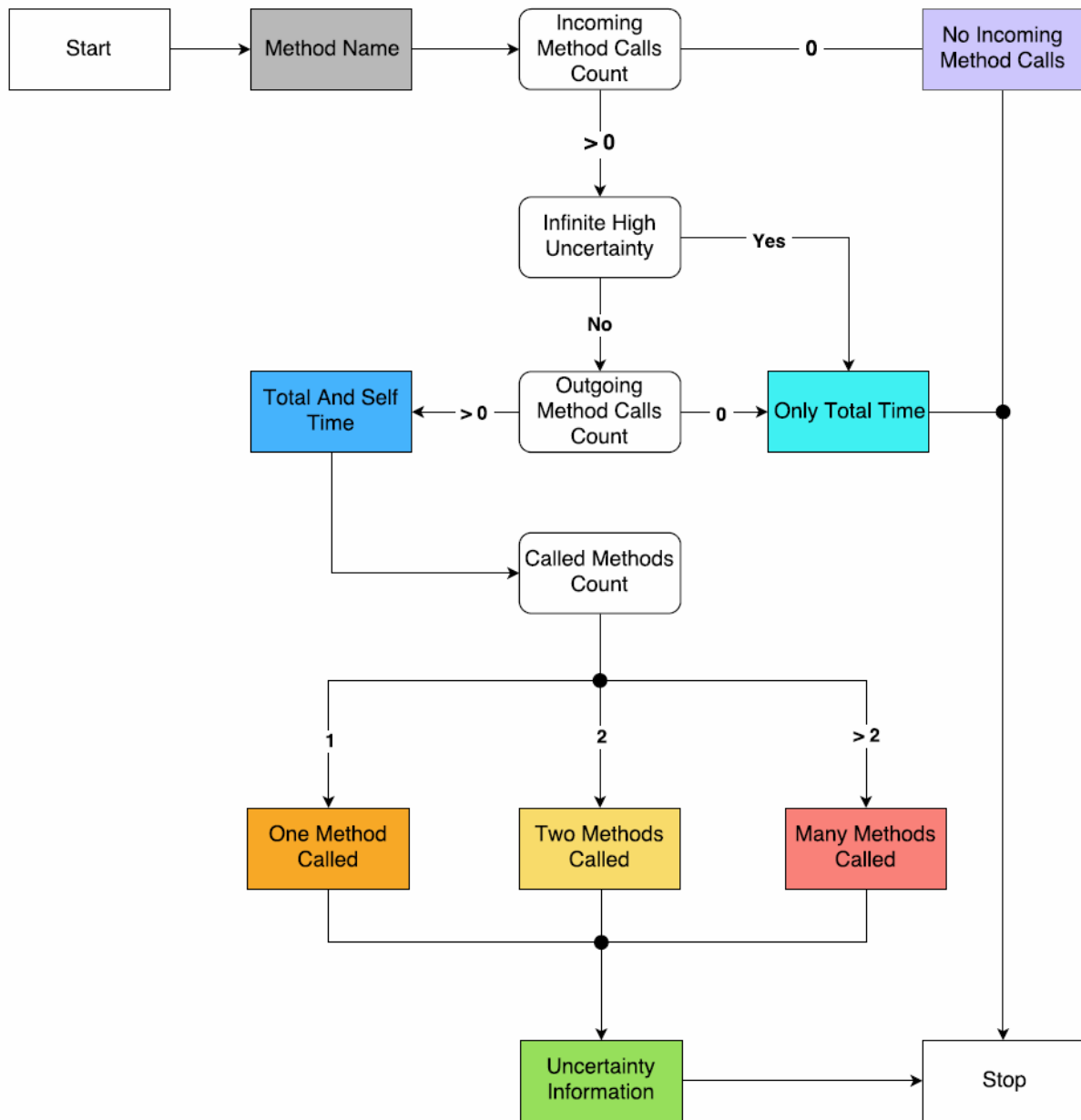
1.1
Recursion depth of method <method> went to only to 1 level.

Template 2 (1x2=2)

2.1
Recursion depth of method <method> went up to <2+> levels.

2.2
It reached depth level <no> maximum times which was <1+>.

Runtime Consumption



Legend (14)

Method Name
No Incoming Method Calls
Only Total Time
Total Time And Self Time
One Method Called
Two Methods Called
Many Methods Called
Uncertainty Information

Template 1 (2 = 2)

1.1

Method <method> was never called.

Method <method> took <n> [No Visualization] ms. Due to insufficient information, meaningful information regarding time cannot be concluded.

Template 2 (3x4 = 12)

2.1

Method <method> took <n> ms, out of which <n> ms were consumed as self time and <n> ms by outgoing calls made to method <method>.

Method <method> took <n> ms, out of which <n> ms were consumed as self time and <n> ms by outgoing calls. Outgoing calls made to method <method> took <n> ms and to method <method> took <n> ms.

Method <method> took <n> ms, out of which <n> ms were consumed as self time and <n> ms by outgoing calls made to <2+> methods. Outgoing calls made to method <method> took maximum time, which was <n> ms.

2.2

Please note the measurements are uncertain due to short runtime of method <method>.

Please note the measurements are uncertain due to short runtime of outgoing calls.

Please note the measurements are uncertain due to short runtime of method <method> and its outgoing calls.